

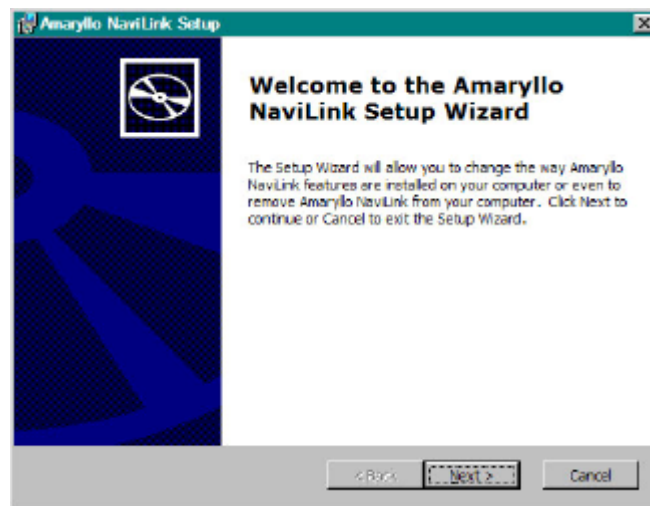
Installing the NaviLink Software

Please check the website for the latest version that has Google Earth support build in

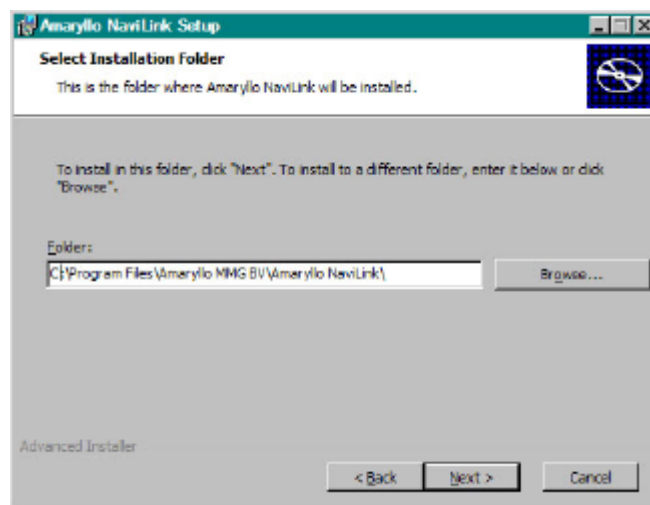
Check the drivers sections at <http://www.amaryllo.com/drivers.html>

Download the NaviLink software for the Latest version

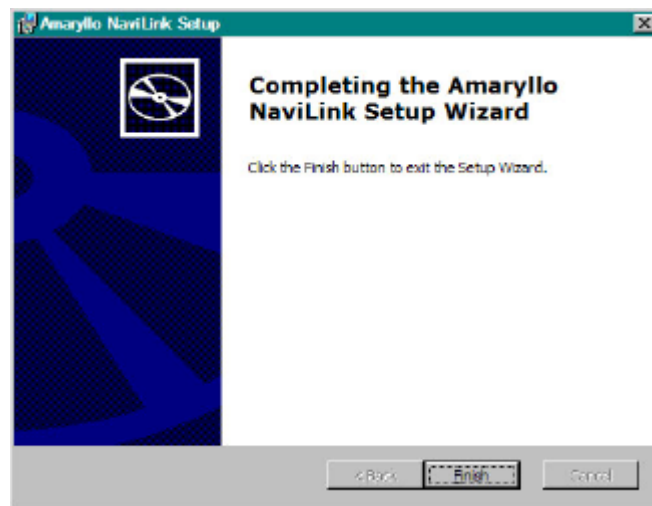
Double click on the Navilink installer (Setup Navilink.msi) you just download and start setup



Click on the next button



Click on the Finish button



Now the installation of NaviLink is complete and NaviLink is ready for use. You can start NaviLink by clicking the NaviLink icon on the Desktop.